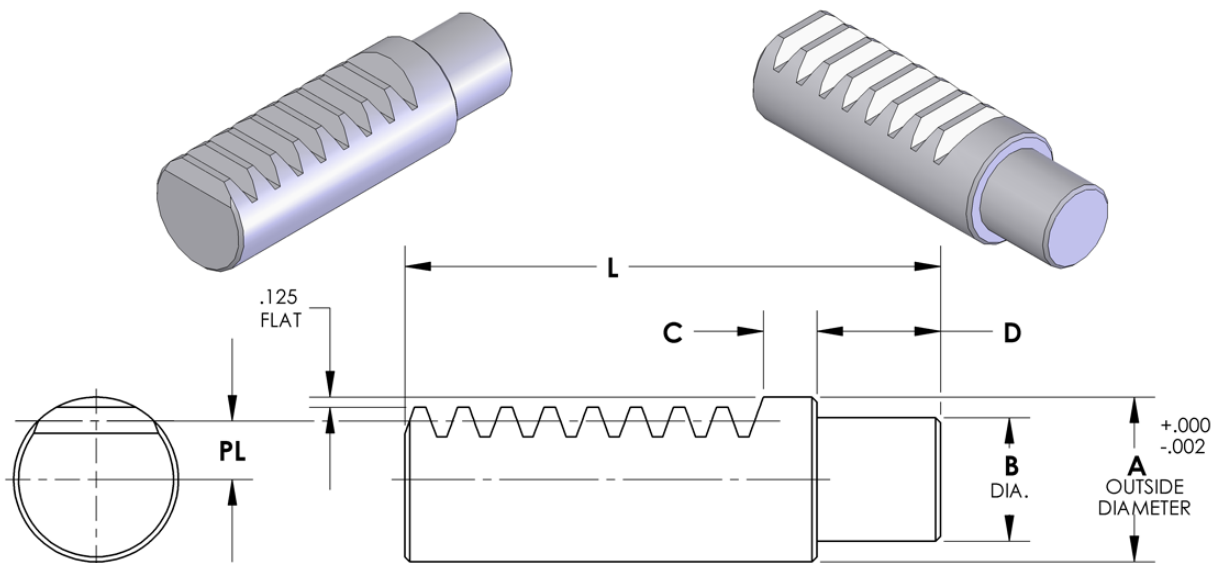




Custom Racks for Industrial Applications

Designers and Manufacturers of Machines • Tools • Fixtures • Test Equipment

R100 SERIES RACKS - SHANK TYPE



R100 SERIES SPECIFICATIONS

ALL DIMENSIONS IN INCHES

PART NUMBER	A DIA.	B DIA.	C DIM.	D DIM.	L DIM.	PL DIM.	PITCH
R101	1.000						
R102	1.250						
R103	1.500						
R104	1.750						
R105	2.000						
R106	2.250						
R107	2.500						
R108	2.750						
R109	3.000						
R110	3.250						
R111	3.500						
R112	3.750						
R113	4.000						
R114	4.125						
R115	4.250						

PLEASE SPECIFY WHEN ORDERING

SEE NOTE BELOW

PLEASE SPECIFY WHEN ORDERING

FORMULA TO CALCULATE "PL" DIMENSION

$$PL = (A/2) - .125 - (1/PITCH)$$

EXAMPLE (FOR "A" = 2.00; PITCH = 6) .7083 = (1.000) - .125 - (.1666)

* NOTE: COMBINATION PITCHES ARE AVAILABLE ONLY IN 20 DEGREE PRESSURE ANGLE.

STANDARD MATERIAL 4140
ROCKWELL "C" 28 - 30

PART NUMBER EXAMPLE

R101 - 3.00 - 15.00 - 20 - 8 - .500 - .500

SERIES#

UNCUT LENGTH "C"
(ENTER 0 FOR
TEETH FULL LENGTH)

OVERALL LENGTH "L"

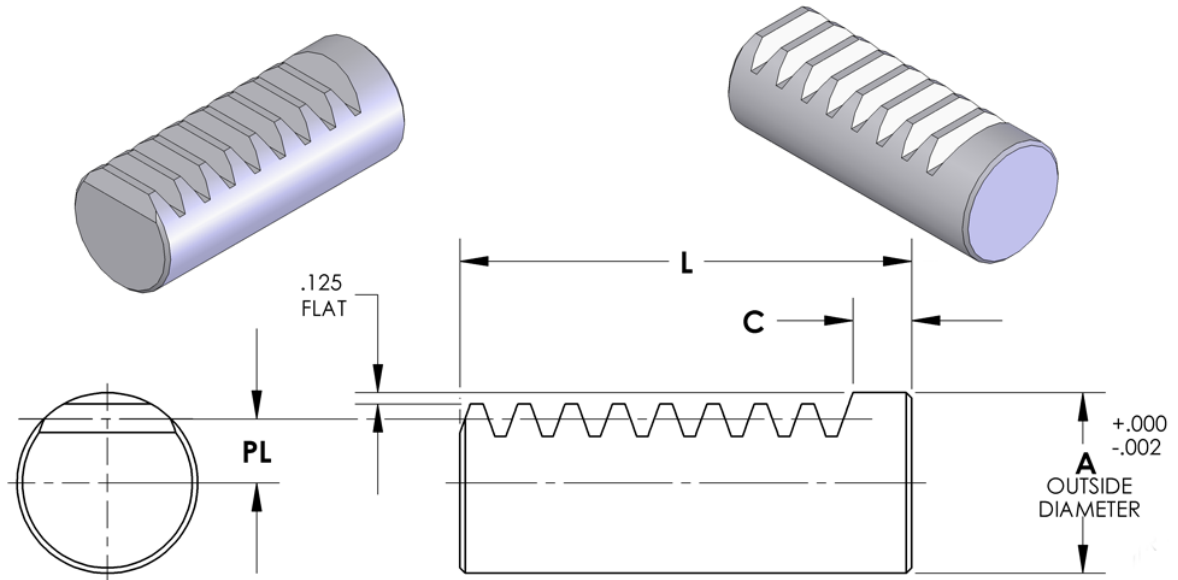
PRESSURE ANGLE * 14-1/2 OR 20

"D" DIMENSION

"B" DIMENSION

PITCH * 3 D.P. THRU 48 D.P.
COMBINATION, FRACTIONAL
& MODULE

R200 SERIES RACKS - PLAIN END TYPE



R200 SERIES SPECIFICATIONS

ALL DIMENSIONS IN INCHES

PART NUMBER	A DIA.	C DIM.	L DIM.	PL DIM.	PITCH
R201	1.000	PLEASE SPECIFY WHEN ORDERING		SEE NOTE BELOW	PLEASE SPECIFY WHEN ORDERING
R202	1.250				
R203	1.500				
R204	1.750				
R205	2.000				
R206	2.250				
R207	2.500				
R208	2.750				
R209	3.000				
R210	3.250				
R211	3.500				
R212	3.750				
R213	4.000				
R214	4.125				
R215	4.250				

FORMULA TO CALCULATE "PL" DIMENSION

$$PL = (A/2) - .125 - (1/PITCH)$$

EXAMPLE (FOR "A" = 2.00; PITCH = 6) .7083 = (1.000) - .125 - (.1666)

* NOTE: COMBINATION PITCHES ARE AVAILABLE ONLY IN 20 DEGREE PRESSURE ANGLE.

PART NUMBER EXAMPLE

R201 - 3.00 - 15.00 - 20 - 8

SERIES#

UNCUT LENGTH "C"
(ENTER 0 FOR
TEETH FULL LENGTH)

OVERALL LENGTH "L"

PRESSURE ANGLE * 14-1/2 OR 20

PITCH * 3 D.P. THRU 48 D.P.
COMBINATION, FRACTIONAL
& MODULE

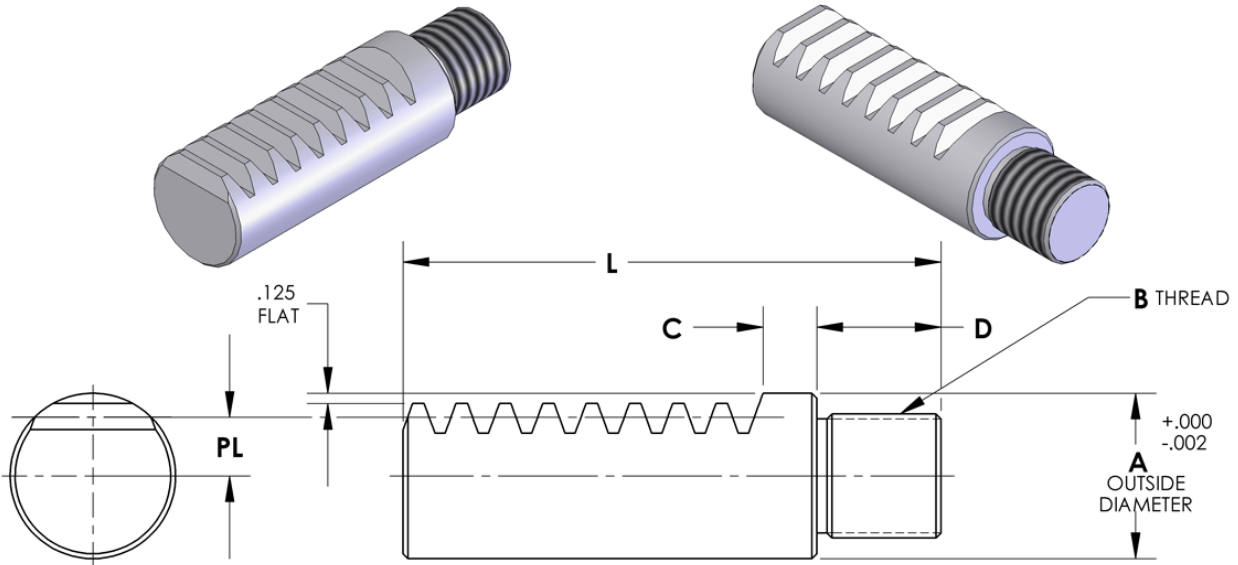
STANDARD MATERIAL 4140
ROCKWELL "C" 28 - 30



Phone: (517) 563-8136 | sales@lomar.com | www.lomar.com

Automotive • Aerospace • Agriculture • Appliance • Food • Furniture • HVAC & R • Medical • Military

R300 SERIES RACKS - THREADED SHANK TYPE



R300 SERIES SPECIFICATIONS

ALL DIMENSIONS IN INCHES

PART NUMBER	A DIA.	B THREAD	C DIM.	D DIM.	L DIM.	PL DIM.	PITCH
R301	1.000	PLEASE SPECIFY WHEN ORDERING				SEE NOTE BELOW	PLEASE SPECIFY WHEN ORDERING
R302	1.250						
R303	1.500						
R304	1.750						
R305	2.000						
R306	2.250						
R307	2.500						
R308	2.750						
R309	3.000						
R310	3.250						
R311	3.500						
R312	3.750						
R313	4.000						
R314	4.125						
R315	4.250						

FORMULA TO CALCULATE "PL" DIMENSION
 $PL = (A/2) - .125 - (1/PITCH)$
 EXAMPLE (FOR "A" = 2.00; PITCH = 6) $.7083 = (1.000) - .125 - (.1666)$

* NOTE: COMBINATION PITCHES ARE AVAILABLE ONLY IN 20 DEGREE PRESSURE ANGLE.

STANDARD MATERIAL 4140
ROCKWELL "C" 28 - 30

PART NUMBER EXAMPLE

R301 - 2.50 - 12.50 - 20 - 8 - 3/4-16 - .500

SERIES#

UNCUT LENGTH "C"
(ENTER 0 FOR
TEETH FULL LENGTH)

OVERALL LENGTH "L"

PRESSURE ANGLE * 14-1/2 OR 20

"D" DIMENSION

"B" THREAD

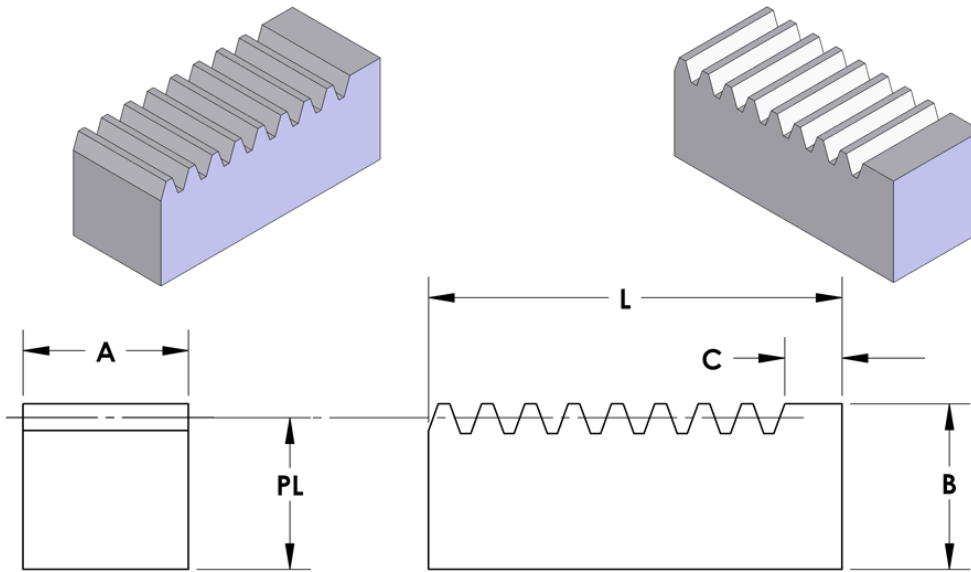
PITCH * 3 D.P. THRU 48 D.P.
COMBINATION, FRACTIONAL
& MODULE



Phone: (517) 563-8136 | sales@lomar.com | www.lomar.com

Automotive • Aerospace • Agriculture • Appliance • Food • Furniture • HVAC & R • Medical • Military

R400 SERIES RACKS - SQUARE TYPE



R400 SERIES SPECIFICATIONS

ALL DIMENSIONS IN INCHES

PART NUMBER	A DIA.	B DIM.	C DIM.	L DIM.	PL DIM.	PITCH
R401	.500	.500	PLEASE SPECIFY WHEN ORDERING		SEE NOTE BELOW	PLEASE SPECIFY WHEN ORDERING
R402	.750	.750				
R403	1.000	1.000				
R404	1.250	1.250				
R405	1.500	1.500				
R406	1.750	1.750				
R407	2.000	2.000				
R408	2.500	2.500				
R409	3.000	3.000				
R410	3.250	3.250				
R411	3.500	3.500				
R412	3.750	3.750				
R413	4.000	4.000				
R414	4.250	4.250				
R415	4.500	4.500				

FORMULA TO CALCULATE "PL" DIMENSION

$$PL = B - (1/PITCH)$$

EXAMPLE (FOR "B" = 1.25; PITCH = 8) 1.125 = 1.25 - (.125)

* NOTE: COMBINATION PITCHES ARE AVAILABLE ONLY IN 20 DEGREE PRESSURE ANGLE.

PART NUMBER EXAMPLE

R401 - 0.00 - 18.00 - 20 - 8

SERIES#

UNCUT LENGTH "C"
(ENTER 0 FOR
TEETH FULL LENGTH)

OVERALL LENGTH "L"

PRESSURE ANGLE * 14-1/2 OR 20

PITCH * 3 D.P. THRU 48 D.P.
COMBINATION, FRACTIONAL
& MODULE

STANDARD MATERIAL 4140
ROCKWELL "C" 28 - 30



ISO 9001: 2008

Alliance
International Registrar, LLC

135 Main Street | P.O. Box 128 | Horton, MI. 49246 U.S.A.

Phone: (517) 563-8136 Fax: (517) 563-8107

sales@lomar.com | www.lomar.com

Veteran
Owned

Automotive • Aerospace • Agriculture • Appliance • Food • Furniture • HVAC & R • Medical • Military